

Melvin Edwards

B WIRE, BEWARE, ALL WAYS ART
Steel, Paper & Paint

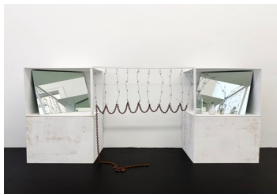
15 September - 21 October 2023

I.



Untitled, c. 1974
watercolor and ink on paper
50.8 x 66 cm
(framed: 54.2 x 69.3 x 3.5 cm)
MED/P 1974/36

II.



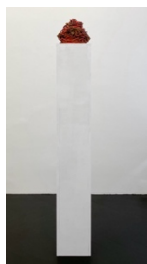
Maquette (Curtain on Possibility), 1970 - 2023
painted wood, hooks, mirrors, barbed wire, metal
chain, 2 glass bottles, glass, spoon
133 x 227 x 96 cm
MED/I 2023/07

A maquette for a larger installation, this work recalls Melvin Edwards's 1969 barbed wire curtain, *Curtain for William and Peter*.



Untitled, 2023
wooden hat form, wooden plate
18.5 x 15.5 x 19 cm
plinth: 155 x 23 x 25 cm
MED/S 2023/06

A tribute to the metal workers of Benin, this found hat form's scale recalls the famous bronzes of the country. The pedestal is raised to the height of the artist's shoulders.



Untitled, 2023
wood discs, metal chains, spray paint, snap hook,
metal hook, bolt, two nuts
21 x 23 x 24 cm
plinth: 155 x 23 x 25 cm
MED/S 2023/05

A tribute to Benin, this work's coiled and spray-painted chains pay homage to the famous metalworking traditions of the country. Again installed on a pedestal raised to the height of the artist's shoulders.



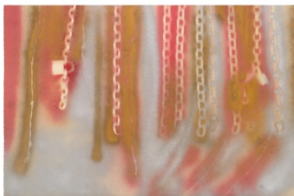
Variation X, 1973 - 2023
3 cots, spray paint, metal chains, padlock, bolts,
nuts, chain sockets, barbed wire strings, wood
sticks, fabric
installation dimensions variable
MED/I 2023/01

A significant element of the collapsible cot, its crossed X bars, is a reoccurring motif in Melvin Edwards's practice.

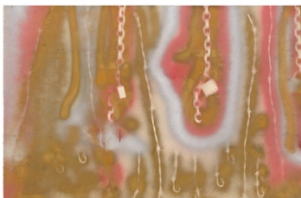


Untitled, c. 1974
watercolor, ink and spray paint on paper
48.5 x 64.5 cm
(framed: 53 x 68 x 3.5 cm)
MED/P 1974/33

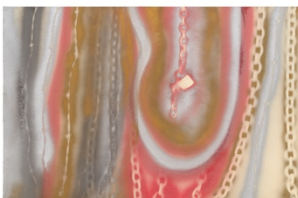
III.



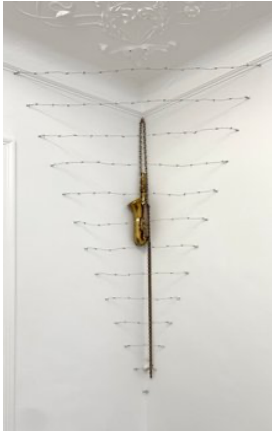
Untitled, c. 1974
spray paint on paper
58.4 x 88.9 cm
(framed: 61.7 x 92.7 x 3.5 cm)
MED/P 1974/29



Untitled, c. 1974
spray paint on paper
58.4 x 88.9 cm
(framed: 61.7 x 92.7 x 3.5 cm)
MED/P 1974/30



Untitled, c. 1974
spray paint on paper
58.4 x 88.9 cm
(framed: 61.7 x 92.7 x 3.5 cm)
MED/P 1974/28



Now's the Time, 1970 - 2023
saxophone, two metal chains, snap hooks,
nail, barbed wires, hooks
installation dimensions variable
MED/I 2023/04

The title of this barbed wire installation, with its descending strands of material, derives from a jazz standard by Charlie Parker.

IV.

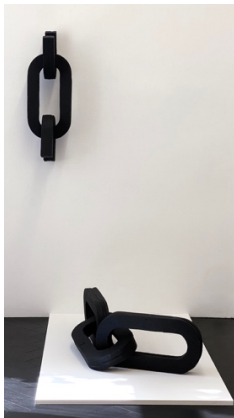


Untitled, 1982
spray paint and graphite on paper
76.5 x 101.5 cm
(framed: 79.6 x 104.8 x 3.5 cm)
MED/P 1982/01



Untitled, 1969 - 2023
3 rusted metal chains
Ø 66 cm (height approx. 8 cm)
MED/S 2023/03

Melvin Edwards has exhibited coiled chain structures as a form of drawing in space since the late 1960s.



Untitled (Tribute to Benin), 2000
wood, paint, screws, connecting metal plates, nails
wall sculpture: 94 x 31 x 35 cm
floor sculpture: 31 x 72 x 91 cm
MED/S 2000/01

This wooden sculpture resembles elements of a broken chain and is conceived by Melvin Edwards as a response to the theft of bronze works from Benin.



Untitled (Belgian Congo), 2019 - 2023
 barbed wire, 4 pairs of gloves, spray paint, clothes
 pegs, metal hooks
 installation dimensions variable
 MED/I 2023/02

This piece, which resembles a clothesline made of barbed wire, with a row of four pairs of gloves, is a reference to the atrocities committed in the Belgian Congo. In the rubber industry workers who failed to meet quotas and did not deliver enough natural rubber had their hands cut off as punishment. Alongside three pairs of spray painted working gloves the artist hung his own.

Office:



Untitled, c. 1974
 watercolor, ink and spray paint on paper
 45.7 x 61 cm
 (framed: 49.3 x 64.3 x 3.5 cm)
 MED/P 1974/35